

Go Direct

SONNY'S[®]

THE CAR WASH FACTORY

SonnysDirect.com/go-direct/

Tire Brush Poodle / Ninja / Bison



Owners Manual

Sonny's Enterprises, Inc.
5605 Hiatus Road
Tamarac, Florida 33321

Table of Contents

| | |
|---------------------------------------|-----------|
| *INTRODUCTION* | 3 |
| Product Specifications..... | 4 |
| Optional Related Equipment | 5 |
| *SAFETY REQUIREMENTS* | 7 |
| *INSTALLATION* | 8 |
| Utilities Requirements | 8 |
| Dimensions | 9 |
| Equipment Installation | 11 |
| Equipment Installation | 13 |
| *GENERAL OPERATION* | 16 |
| *PREVENTIVE MAINTENANCE* | 17 |
| *PARTS LIST* | 18 |
| *UPGRADE TIRE BRUSH* | 19 |
| *CUSTOMER SERVICE* | 22 |

INTRODUCTION

This Owner's Manual contains information that is vital to the successful installation, operation and maintenance of your SONNY'S vehicle washing equipment.

Please read, and understand, the full contents of this manual before installation and operation of the equipment. Keep this booklet in a location where it may be used for ongoing reference.

Should you have any questions on the operation or servicing of this equipment please contact

**TECHNICAL SERVICES DEPT.
SONNY'S ENTERPRISES INC.**

5605 Hiatus Road

TAMARAC, FLORIDA 33321

TELEPHONE: 800-327-8723 FAX: 800-495-4049

THANK YOU FOR YOUR CONFIDENCE IN SONNY'S !!!!



Product Specifications

- Accepts 6, 7, or 8 inch diameter tire brushes, 96 inches long.
- New aluminum frame and hangers. Also available in stainless steel.
- Plastic approach guides.
- Height adjustable.
- Mechanically adjustable shock absorber control is standard.
- Retract air cylinder control available.
- 4 bolt spindle type brush mounting.
- Economical and reliable aluminum motor coupler.
- Greaseable bearings throughout.
- 14 ft. 2 in. (170") of tunnel length required for passenger side brush unit.
- 12 ft. (144") of tunnel length required for driver side brush unit.
- 17 ft. (204") of length is required for InBay units.

Optional Related Equipment

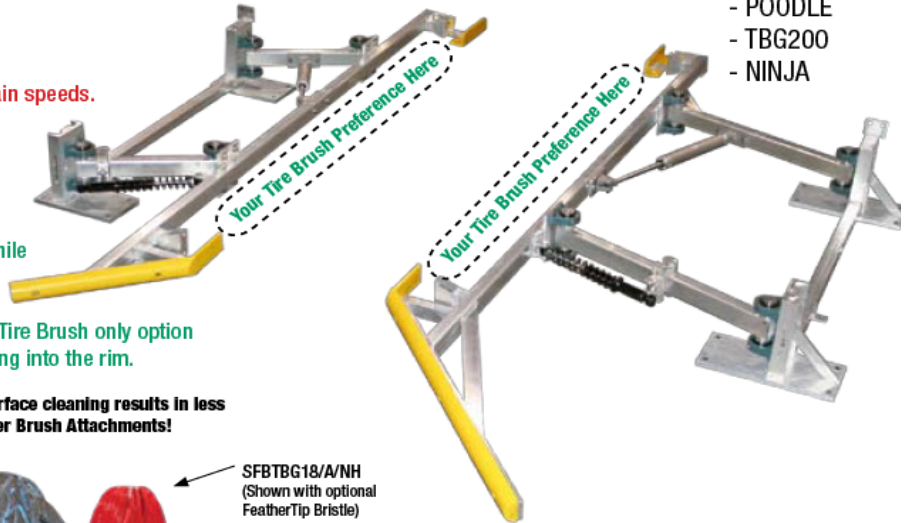
SONNY'S Tire & Wheel Brushes



You need clean tires AND wheels at fast chain speeds.



SONNY'S Bison, Poodle, and Ninja brushes give you three options depending on your preference to clean road grime from tires while loosening dirt and brake dust from wheels. All brushes are interchangeable with our standard TBG200 frame and we also offer a Tire Brush only option for operators who don't want a brush reaching into the rim.



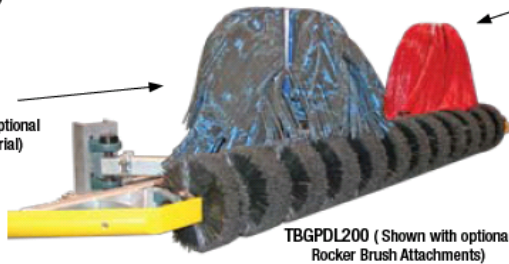
1 frame, 4 different tire brush options:

- BISON
- POODLE
- TBG200
- NINJA



Get dramatic wheel and lower surface cleaning results in less tunnel space with SONNY'S Rocker Brush Attachments!

SFBTBG18/A
 (Shown with optional NeoGlide Material)



SFBTBG18/A/NH
 (Shown with optional FeatherTip Bristle)

TBGPDL200 (Shown with optional Rocker Brush Attachments)

"One of the fundamentals of customer satisfaction and increasing wash frequency is producing clean wheels and tires. When used in conjunction with a chemical tire application system, our Bison, Poodle, and Ninja Brushes reach deep into wheels, loosening dirt and brake dust while cleaning road grime from tires. Don't want to touch the wheels? No problem, our standard Tire Brush is still available and easily retrofits to any other brush design if you later change your mind."

SONNY'S Bison Brush™

Clean tires and rims better while reducing operating costs with SONNY'S new Bison Brush. Alternating staggered bristle lengths improve contact time while reaching deeper into rims for maximum cleaning. Each 7in section "pet" of the brush can be replaced individually to save money.



TBGBISONBLUE
 (Also available in Red)



ELECTRIC
 HYDRAULIC

SONNY'S Poodle Brush™



SONNY'S POODLE Brush increases the reach of our TBG200 TIRE Brush to safely clean both tires AND wheels. Available with new TIRE Brushes or as a retrofit for existing units, this durable upgrade delivers the performance your customers demand.



TBGPDL200

Ordering Information

| | Description | Item # | Price |
|---------------------------------|---|----------------------|-----------|
| Tire Brush | TBG200 - Free Standing (Hydraulic Drive) | TBG200 | \$4585.00 |
| | TBG200 - Attachment (Hydraulic Drive) | TBG200/A | 4015.00 |
| Bison Brush | Bison Brush - Free Standing (Hydraulic Drive) | TGBBISON | 4985.00 |
| | Bison Brush - Attachment (Hydraulic Drive) | TGBBISONA | 4455.00 |
| | Bison Brush - Free Standing (Electric Drive) | TGBBISONE | 6383.00 |
| | Bison Brush - Attachment (Electric Drive) | TGBBISONAE | 5853.00 |
| Poodle Brush | Poodle Brush - Free Standing (Hydraulic Drive) | TBGPDL200 | 4985.00 |
| | Poodle Brush - Attachment (Hydraulic Drive) | TBGPDL200/A | 4455.00 |
| Ninja Brush | Ninja Brush - Free Standing (Hydraulic Drive) | TBGNJA200 | 7430.00 |
| | Ninja Brush - Attachment (Hydraulic Drive) | TBGNJA200/A | 6895.00 |
| Retract Option | Tire Brush Retract Kit 24V | RETRACT-TBG200/24V | 695.00 |
| | Tire Brush Retract Kit 120V | RETRACT-TBG200/110V | 695.00 |
| Rocker Brush Attachments | 18 In Rocker Brush Set - Permacolor Cloth | SFBTBG18/A | 1955.00 |
| | NEOGLIDE Upgrade for SFBTBG18/A | SFBTBG18NG-UG | 400.00 |
| | 18 In Rocker Brush Set - No Hub (For Bristle Hub) | SFBTBG18/A/NH | 1740.00 |
| | Feather Tip Brush and Hub for SFBTBG18/A/NH | SFBTBG18/BRISTLE/SET | 463.55 |

Specifications

| Tire Brush | Inches | Metric |
|--------------------------------|-----------------|---------------|
| Tunnel Length | 173in | 4,394mm |
| Hydraulic | 6 gpm @ 800 psi | .4 ltrs/sec @ |
| | | 56 kgs/sq cm |
| RPM | 250 to 400RPM | |
| Optional Electric (Bison Only) | 1 HP each side | |

| SFBTBG18/A | | | |
|---------------------|-------------|--------------|--|
| Hydraulic/ series | 3 gpm | .19 ltrs/sec | |
| Hydraulic/ parallel | 6 gpm | .38 ltrs/sec | |
| RPM | 75 - 90 RPM | | |

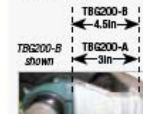
Bison, Poodle, and Ninja Retrofit Kits



Looking for an affordable way to get cleaner wheels with less labor and chemical? If you have an existing SONNY'S Tire Brush, you can easily update to our latest technology with one of these retrofit kits that include everything you need including the brush!

Which TBG200 Retrofit Kit?

It's easy to tell. If the pillow block bearings are 3in from the frame you need the "A" style retrofit kit. If they are 4.5in then you need the "B" style kit.



| TBG200-A (3in) Retrofit Item # | Manufactured before 03/2006 | Price |
|----------------------------------|-----------------------------|-----------|
| TGBBISON/CONV | a Bison Brush | \$1846.50 |
| TBGPDL/CONV | a Poodle Brush | 1700.00 |
| TBGNJA200/CONV | a Ninja Brush | 4565.00 |
| TBG200-B (4.5in) Retrofit Item # | Manufactured after 03/2006 | Price |
| BISON96X12 (set) | a Bison Brush | \$1350.00 |
| POODLE96X12 (set) | a Poodle Brush | 1203.50 |
| TBGNJA200/BRUSH/SET | a Ninja Brush | 3570.00 |

SONNY'S TBG200 Tire Brush

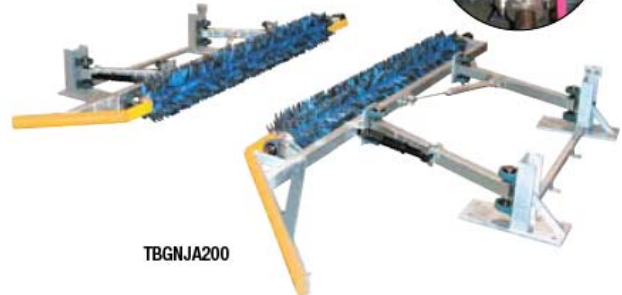
SONNY'S TBG200 Tire Brush available in galvanized or stainless steel, thoroughly cleans tires while rounded UHMW guides provide smooth and safe operation on wheels or rims of any profile.



TBG200

SONNY'S Ninja Brush™

SONNY'S Ninja Brush combines the increased cleaning reach of our Bison & Poodle brushes with ultra-safe NeoGilde closed cell wash material. Alternating material lengths of the "Ninja" star material design reaches deep inside wheels safely, while delivering excellent tire cleaning results.



TBGNJA200

SAFETY REQUIREMENTS

1. Only those employees specifically instructed by the location manager will be permitted to enter the wash tunnel to perform inspections or maintenance.
2. Do not enter the wash tunnel when the equipment is operating.
3. Always exercise caution when walking through the wash area, may be slippery conditions.
4. Be cautious when walking through the tunnel to avoid running into or tripping over equipment.
5. Do not ever run through the wash area.
6. Do not perform any work on equipment unless you performed Lock-Out Safety Precautions.
7. When maintenance requires that a piece of equipment be in operation, one qualified maintenance person must stay at the power disconnect switch while that equipment is operating.
8. All electrically powered equipment must have manually operated disconnects capable of being locked in the "OFF" position. Equipment that has been "locked out" for any reason can only be restarted by the person who performed the "lock out" operation.
9. Do not attempt to repair or adjust any pressurized liquid or pneumatic part, hose, pipe or fitting while that equipment is in operation.
10. Any "Stop" switch activated must be reset only by the person who initiated the operation.
11. Electrical connections and repairs are to be performed by a Licensed Electrician only.
12. Store all cleaning and washing solutions and oils in a well ventilated area.
13. Clean up fluid spills immediately to prevent hazardous safety conditions.
14. Be certain to follow all safety procedures on MSDS Sheets for each chemical product used.
15. All new employees must be thoroughly trained in safe operating and maintenance practices.
16. All employees must attend periodically scheduled safety procedure sessions.
17. Do not operate any piece of equipment that requires safety covers with those covers removed or improperly installed.
18. Do not allow any part of your body or other object to come in contact with moving machinery.
19. Do not wear loose fitting clothing or jewelry around moving machinery.
20. At least two qualified maintenance people must be present when performing equipment repairs or preventative maintenance.
21. When working on any equipment that is higher than a person's shoulders always use a fiberglass ladder that is in good condition.

INSTALLATION

Utilities Requirements

**UTILITIES INTERCONNECTION AND THE MATERIALS REQUIRED FOR INTERCONNECTION TO SONNY'S EQUIPMENT ARE THE RESPONSIBILITY OF THE CUSTOMER !
PERFORM ALL TRADES WORK TO ALL APPLICABLE LOCAL AND NATIONAL CODES !**

Optional Brush Retract Kit Installation

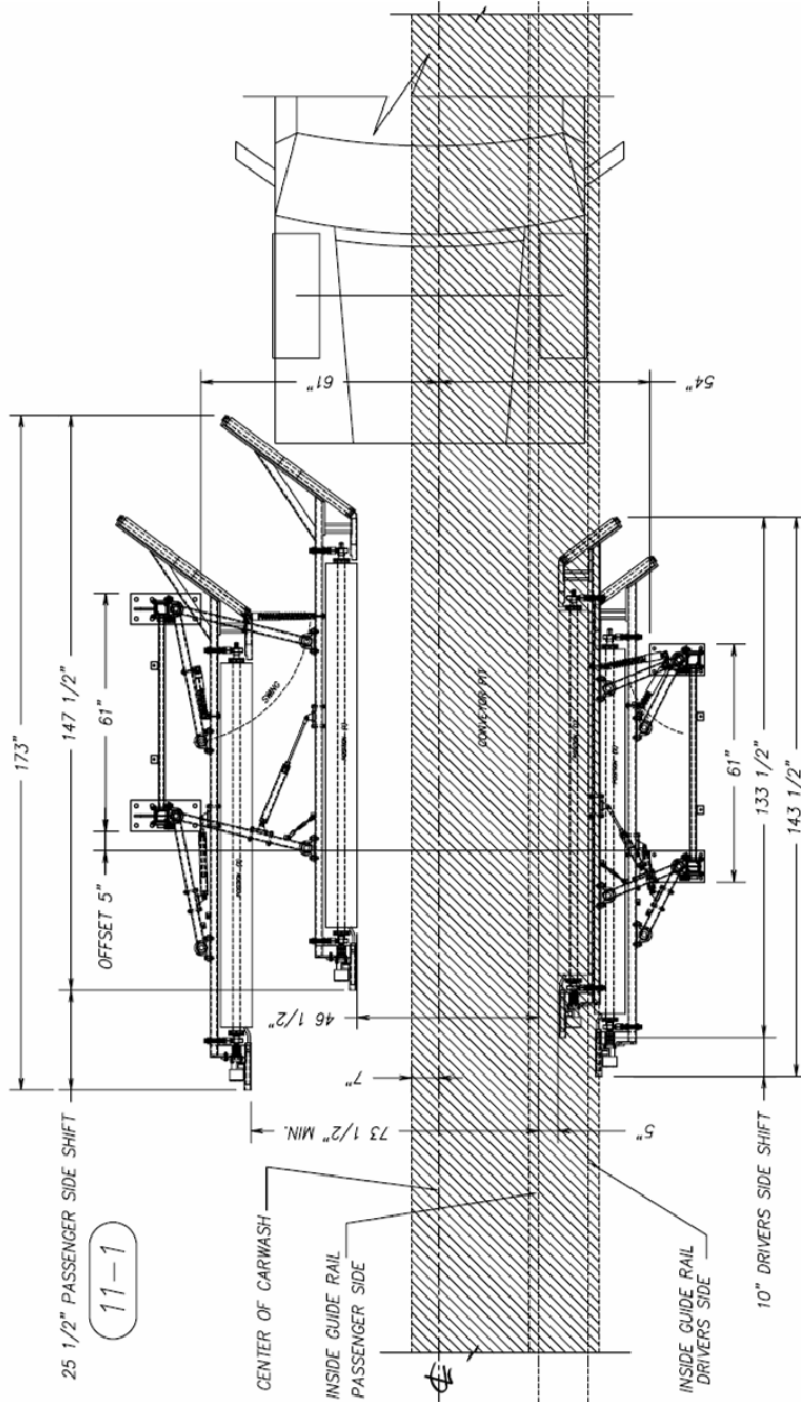
Pneumatic

- The Customer's Plumber is to supply and install 3/8 inch line from the Air Compressor (100PSI @1.0CFM) through the supplied air regulator on the Air Distribution Manifold.

Electric

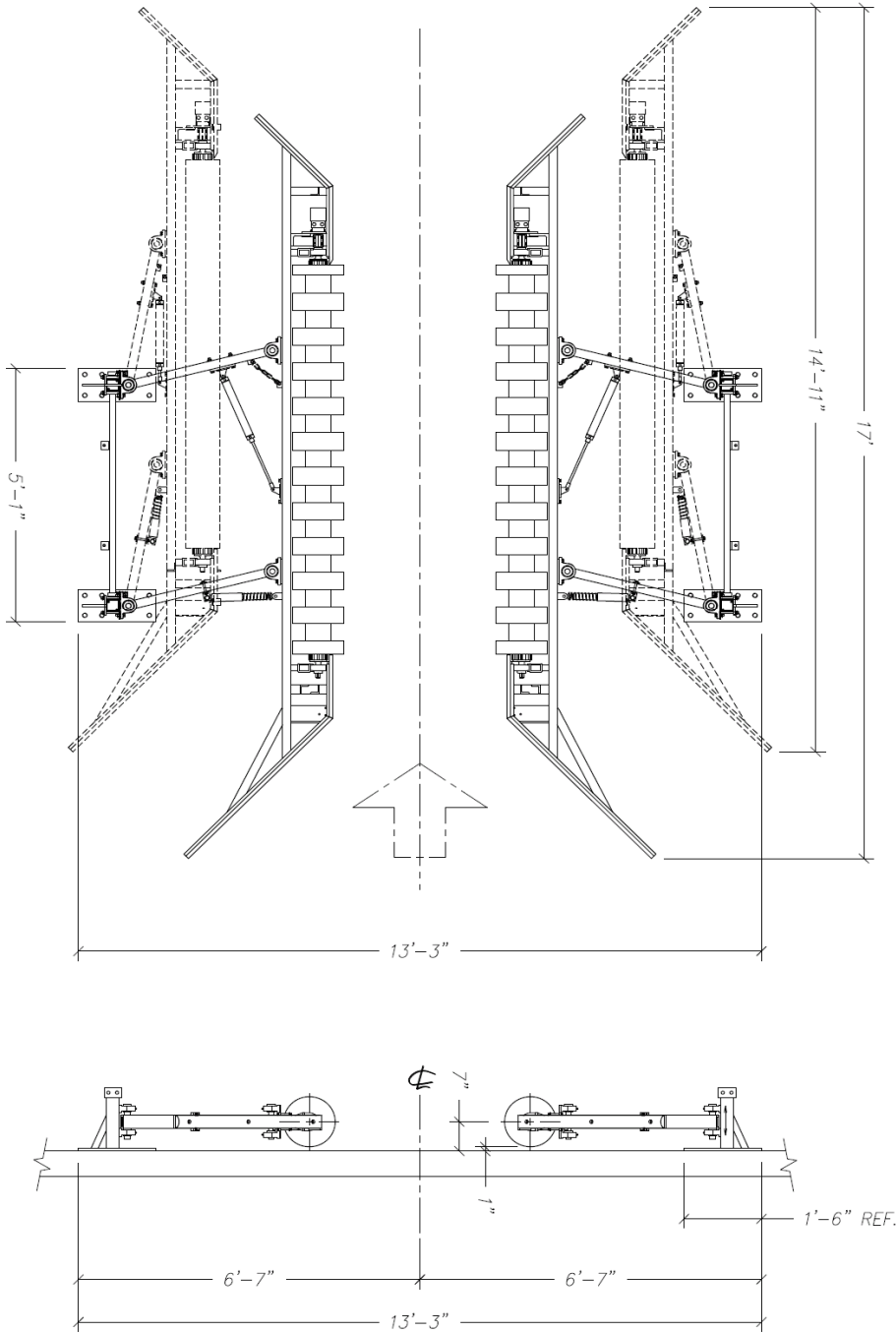
- The Customer's Electrician is to supply materials and install single phase power (120VAC or 24VAC) from the tunnel equipment controller tire brush programmable retract function to the Sonny's supplied air solenoid valve for selective retract of the tire brushes.

Dimensions



Brush height from finished floor:

TBG200 - 6 in.
 Poodle brush - 7 in.
 Ninja brush - 7 in.



Equipment Installation

Tire Brush – Mechanical Installation

Installation

1. Safety Glasses and Gloves
2. 1/2" Drive Ratchet
3. 1/2" Drive Sockets
4. Combo Wrenches
5. Large Standard Screwdriver
6. 1" Hammer Drill
7. 3 lb Sledge Hammer
8. Tape Measure

Manpower

Two (2) men

Consumables

1. Stainless Shims
2. Teflon Tape
3. Teflon Paste
4. Nylon Cord

Time (assuming no problems)

2.00 - 3.00 hours

Installation Steps

1. Determine where the Tire Brushes are to be installed.
2. Sweep any debris from where the Tire Brushes will sit.
3. Set the Tire Brushes in place.
4. Tie the Passenger side unit temporarily in its full retracted position.
5. Measure 74 inches from the outer edge of the plastic angle that protects the hydraulic brush drive motor to the inside of the conveyor inside guide rail.
6. Secure the passenger side exit base plate with one floor anchor.
7. Square the frame by using the pillow block bearing mounting channels that are welded to the base plates as the reference.
8. When the unit is square complete the base plates anchoring.
9. Untie the cord and allow the passenger side unit to extend toward the center of the wash tunnel
10. Adjust the hanger heights equally so that the bristles of the tire brush just clear the floor with the brush fully extended.
11. The Driver side unit entrance base plate is to be placed 13 inches closer to the exit of the car wash than the passenger side entrance base plate.

12. With the brush hangers fully extended measure 5 inches from the entrance and exit tips of the brush bristles to the inside of the conveyor inside guide rail.
13. Square the driver side unit in the same manner as that used for the passenger side unit. Mark the floor for proper base plate placement.
14. Mark the conveyor outside guide rail for cutting with the driver side unit fully extended and full retracted.
15. Remove the driver side unit and cut the conveyor outside guide rail where it was previously marked and anchor the driver side unit in the marked floor position.
16. Adjust the driver side brush height so that the rotating brush will have minimal contact with conveyor pusher rollers and no contact with vehicle wheel covers.
17. Run and connect the 1/2 inch PRESSURE line from the Hydraulic Power Pack to the 1/2 inch male pipe thread fitting on the BLACK high pressure hose on the leg of the Tire Brush. (Wire the motor if using electric)
18. Run and connect the 1/2 inch RETURN line to the Hydraulic Power Pack to the 1/2 inch male pipe thread fitting on the RED high pressure hose on the leg of the Tire Brush. (Wire the motor if using electric)
19. Rotation of the Brushes is toward the tire and downward.
20. Run and connect the air lines from the Air Distribution Manifold to the air cylinder for each retract.

Equipment Installation

Tire Brush – In-Bay Mechanical Installation

Tools

1. Safety Glasses and Gloves
2. 1/2" Drive Ratchet
3. 1/2" Drive Sockets
4. Combo Wrenches
5. Large Standard Screwdriver
6. 1" Hammer Drill
7. 3 lb Sledge Hammer
8. Tape Measure

Manpower

Two (2) men

Consumables

1. Stainless Shims
2. Teflon Tape
3. Teflon Paste
4. Nylon Cord

Time (assuming no problems)

2.00 - 3.00 hour

Installation Steps

1. Determine where the Tire Brush is to be installed, it is to be placed after the In Bay.
2. Sweep any debris from where the Tire Brush will sit.
3. Tie both driver side and passenger side units temporarily in its full retracted position.
4. Position the driver side and passenger side units in the general area where they will be installed, but **do NOT anchor at this time!**
5. Measure **74"** from the center line toward the passenger side and place a mark.

Note: See Figure #2 for drawing.

6. Set the rear of the exit end mounting plate on the mark made in step #5, and secure the passenger side exit base plate with one floor anchor.
7. Square the frame by measuring 74" from the center line, place a mark near the rear mounting plate.
8. When you are satisfied the unit is squared and you have double checked the dimensions you may finish anchoring the base plates for the passenger side unit to the floor.
9. Adjust the hanger height so that the vertical center of the Brush is 7 inches above the floor.
10. The mechanical retract stop position may be adjusted by moving the rubber bumper stops on the base plates vertical posts.

11. Repeat steps #5 thru #10 for the driver's side unit.
12. Run and connect the 1/2 inch PRESSURE line from the Hydraulic Power Pack to the 1/2 inch male pipe thread fitting on the BLACK high pressure hose on the leg of the Tire Brush (wire the motor if using electric).
13. Run and connect the 1/2 inch RETURN line to the Hydraulic Power Pack to the 1/2 inch male pipe thread fitting on the RED high pressure hose on the leg of the Tire Brush (wire the motor if using electric).
14. Rotation of the Brushes is toward the tire and downward.
15. Run and connect the air lines from the Air Distribution Manifold to the air cylinder for each retract.

Adjustments and Testing

Adjust the Passenger side hanger heights equally so that the bristles of the tire brush just clear the floor with the brush fully extended.

Adjust the driver side brush height so that the rotating brush will have minimal contact with conveyor pusher rollers and no contact with vehicle wheel covers.

Brush hanger tension may be adjusted by moving the shock absorber mounting brackets for more, or less tension.

Both brushes should rotate downward on the vehicle tires at 125-175RPM (Bison) 150-250RPM (Poodle) 300-400RPM (Ninja)

Air pressure to retract the brushes is normally 40PSI. Check to ensure the tire brushes are retracting all the way to the rubber bumper.

Ensure rubber bumper on the drivers side is adjusted so the plastic guide on the tire brush lines up with the plastic guide on the conveyor.

GENERAL OPERATION

POWER PACK OPERATION

Starting and stopping tire brush rotation is controlled by the Customer's equipment programmer signal to the motor starter coil controlling three phase power to the Customer's hydraulic power pack that is plumbed to the tire brush hydraulic motors.

The speed of the rotation of the motor(s) being driven may be changed by the flow control valve on the hydraulic power pack.

OPTIONAL BRUSH RETRACT KIT OPERATION

A selectively programmed signal from the Customer's equipment programmer to the air solenoid valve provided by Sonny's allows compressed air to pass to the air cylinder retract port on each tire brush frame. When this programmed signal is cancelled the tire brushes will extend toward the center of the wash tunnel.

PREVENTIVE MAINTENANCE

DAILY

1. Check all lines and fittings for leaks. Repair, or replace, as needed.
2. Check the brushes for grease, oil, or foreign objects and clean if necessary.
3. Check both tire brushes for proper operation, listen for any unusual noises and check for vibrating, bouncing and trueness.
4. Manually check the retract operation to ensure proper travel and smoothness of operation.

WEEKLY

1. Grease the rotational bearings on the tire brush shaft.
2. Clean the tire brush thoroughly.

FOR THE FIRST MONTH OF OPERATION CHECK ALL HYDRAULIC FITTINGS FOR TIGHTNESS EACH WEEK. PERFORM THIS INSPECTION TO THE SCHEDULE SHOWN BELOW AFTER THE FIRST MONTH OF OPERATION.

MONTHLY

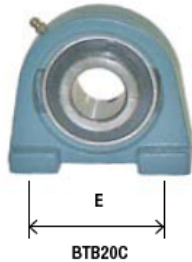
1. Grease all pivotal bearings on the hanger frame work, 16 bearings total.
2. Inspect all hardware and fittings for tightness.
3. Inspect each tire brush for wear if the entrance end is worn the brush may be inverted for short term, but replace as soon as possible.

PARTS LIST

Tire Brush / Brush Flange



| Item # | Description | Price |
|-----------------|--|-------|
| CLTBPN96SPIN | Tire Brush, Poly Nylon Mix 96in | CALL |
| POODLE96X12 | Poodle Brush, Single Replacement Brush | CALL |
| NINJA96X12 | Ninja Brush, Single Replacement Brush | CALL |
| BISON96X12 | Bison Brush, 96in x 12in, Black | CALL |
| BISONPELT/BLACK | Pelt, Bison Tire Brush Black | CALL |
| HF400 | Spindle Flange Only 1 1/4in Shaft | 37.02 |
| HC100-KS | Keystock, 1/4in x 1 1/4in Standard | 1.49 |
| HC100 | Coupler, Split 1in x 1in Aluminum | 10.95 |



2-Bolt Tapped Base Pillow Block Bearing for Tire Brush



- Brush Arms
- To Hold Tire Brush



| Item # | Description | "E" | Price |
|----------|---|-------|---------|
| *BTB20C | Bearing, 2-Bolt Tapped 1 1/4in | 3 1/4 | \$28.79 |
| BTB20CEP | Bearing, 2-Bolt Tapped 1 1/4in Cap Includ | 3 1/4 | 29.40 |
| BTB20CAP | Bearing, Cap Only For BTB20CEP | | 2.75 |

* This Bearing is machined to accept the BTB20CAP cap.

Rubber Stop & Bolt



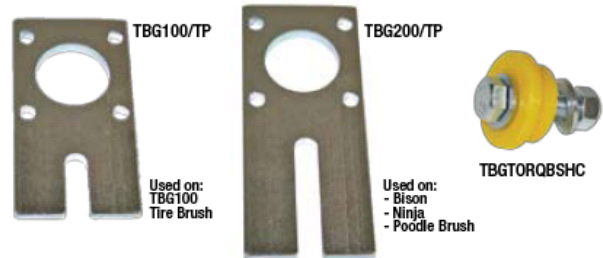
- 3in Dia x 2 1/4in Tall with 1/2 Female Thread



| Item # | Description | Price |
|-----------|----------------------------------|---------|
| SF77RS | Rubber Stop, 3in OD x 2 1/4in ID | \$25.00 |
| BOL12X125 | Bolt, 1/2in 13 x 1 1/4in | 0.25 |

Torque Plate

Galvanized Torque Plate for Tire brush and Poodle brush.



| Item # | Description | Price |
|-------------|---|---------|
| TBG100/TP | Torque Plate, TBG100 Tire Brush 5 1/2in | \$20.60 |
| TBG200/TP | Torque Plate, Poodle Brush, TWB 7in | 23.70 |
| TBGTORQBSHC | Torque Bushing, Complete w/ Hardware | 7.25 |

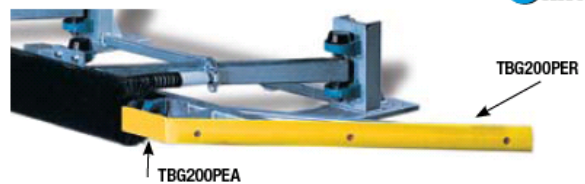
Shock For Tire Brush

- Used on: Side Brushes, Tire Brushes and Tire Shine Machine
- Also used on: Belanger® Side Wheels and Tire Brushes
- Direct replacement for BFL246



| Item # | Description | Price |
|----------|----------------------------------|---------|
| BFL100 | Shock and Spring | \$34.99 |
| BFL100PC | Pin & Cotter, SS 2 1/2in x 5/8in | 9.50 |

Entrance & Exit UHMW Guides



| Item # | Description | Price |
|-----------|---|---------|
| TBG200DXA | UHMW, Exit Angle Driver Side 13.63in | \$14.70 |
| TBG200PXA | UHMW, Exit Angle Passenger Side 13.63in | 14.70 |
| TBG200DEA | UHMW, Tire Brush DS Entrance Angle 7in | 15.50 |
| TBG200PEA | UHMW, Tire Brush, PS Entrance Angle 7in | 15.50 |
| TBG200DER | UHMW, Tire Brush, DS Ent Half Rnd 24.38in | 37.10 |
| TBG200PER | Tire Brush, UHMW PS Ent Half Rd 44.38in | 51.50 |

UPGRADE TIRE BRUSH

Tools

1. Safety Glasses and Gloves
2. Standard Set of Combo Wrenches
3. Four Wooden Blocks
4. Long Pry Bar

Consumables

1. Penetrating Oil

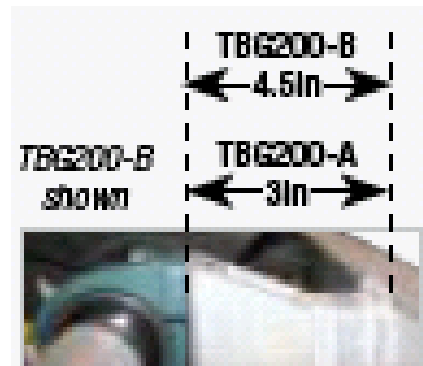
Manpower

Two (2) men

Time (assuming no problems)

1.50 - 3.00 hours

Upgrade Parts (Sonny's Catalog)



Qty

- | | |
|---|---|
| 1 | <p>Upgrade Kit TBG200-A Brush manufactured before 03/2006</p> <ul style="list-style-type: none"> • 96" Brush x 2 • Torque Plate x 2 • Spacers x 4 • All new UHMW (as shown above) • L Bracket x 2 • ½" x 1 ½" Hex Head Bolt x 2 • ½" Hex Nut x 2 • 3/8" x 1" Hex Head Bolt x 8 • 3/8" Lock Washer X 8 • ½" x 2 ½" Hex Head Bolt x 8 • ½" Lock washer x 8 • ½" Flat Washer x 12 |
|---|---|

1 **Upgrade Kit** TBG200-B Brush manufactured after 03/2006

- 96" Brush x 2
- ¼" Flat washer x 8 (Bison only)
- ¼" Lock Nut x 8 (Bison only)
- ¼" x 1" Hex Screw x 8 (Bison only)
- UHMW x 2 (Bison only)



Upgrade Steps

Caution: You must shut off all power to the conveyor and lock out the Motor Control Center before starting this repair.

1. Shut off all power to the conveyor and lock out the Motor Control Center.
2. Block the old brush up with wooden blocks.

Note: If difficulty is encountered in removing the old hardware from the 4-bolt spindles. A generous amount of penetrating oil and patience will solve the problem with the removal of the old hardware. Allow the oil to work at least ten to fifteen minutes before attempting to remove the hardware.

3. Remove the four bolts that mount the entrance end 4-bolt spindle into place. Repeat on the exit end.
4. Roll the old brush out and set aside.
5. If using kit A it will be necessary to install new torque plate onto the motor.
6. Remove the two bolts that secure the entrance end brush bearing in place and set aside the bearing with the 4-bolt spindle mounted to it. Do the same on the exit end.
7. Remove UHMW to be replaced (all pieces if kit A).
8. Bolt the entrance end 4-bolt spindle to the brush using the new hardware. Align the raised circular portion of the 4-bolt spindle with the opening in the tire brush. The brush bearing will be attached to the 4- bolt spindle.

9. Set the new brush in place and mount the brush to the exit end 4-bolt spindle using the new hardware. Align the raised circular portion of the 4-bolt spindle with the opening in the tire brush.
10. Bolt the entrance and exit end brush bearing onto the frame. (add spacers between frame and bearing if kit A and bolt on using new ½" x 2 ½" bolts)
11. Remove the blocks.
12. Install new UHMW it will be necessary to make cuts if using kit A.
13. Repeat on the other side.
14. Remove all tools and equipment from the tunnel.

Caution: Before returning power to the conveyor and removing lock out from the Motor Control Center make sure all tools and equipment is removed and all personnel are clear of the operational area.

15. Turn power on and run the override for the tire brush. Pay attention to the movement of the new brush looking for a warped brush. Discard old parts.
16. To straighten a warped brush, turn the motor off and with the bent portion downward, place a long pry bar under the low part of the bend and lift upward. Remove the bar and test by turning the motor on. Repeat this procedure until the brush runs true.

CUSTOMER SERVICE

Please contact SONNY'S Equipment Department for installation and/or operational questions regarding this piece of equipment.

Please refer to the Parts list in this manual or our Parts Catalog and contact SONNY'S Customer Service Order Entry Department for any replacement parts for this piece of equipment.

For Equipment Repairs please visit the web at www.sonnysdirect.com/manuals.

DEPARTMENT

Toll Free Main Line
Equipment Department

PHONE NUMBERS

800-327-8723
954-720-4100

FAX NUMBERS

800-495-4049
954-720-9292

Or you can email Sales at sales@sonnysdirect.com

Thank you for being a SONNY'S car wash equipment owner!

From all of us here at

