



DETAIL CART

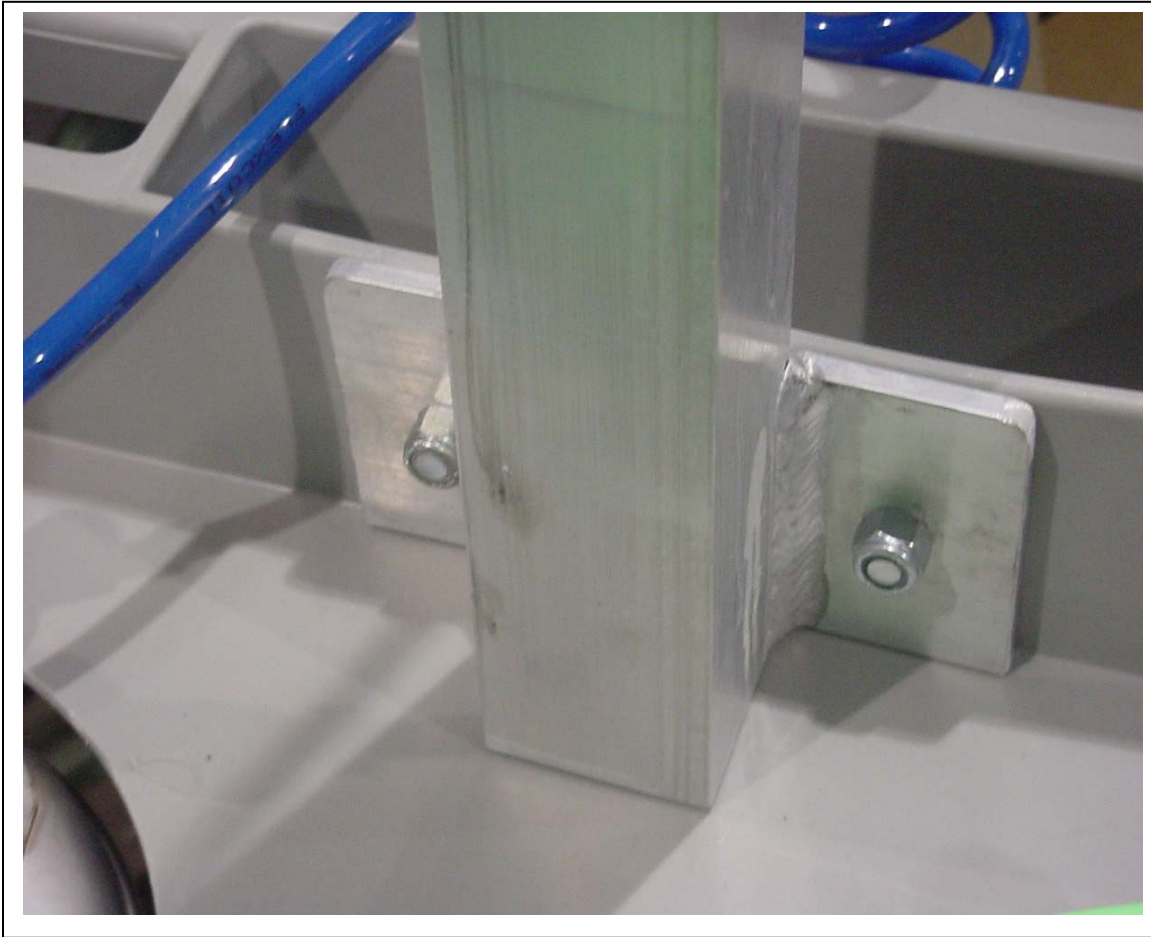
SETTING UP FOR OPERATION:

- + FILL EACH OF THE THREE CHEMICAL TANKS WITH 2 GALLONS OF CHEMICAL..**
 - + THIS IS DONE B Y FIRST SHUTTING OFF THE BALL VALVE AT THE REGULATORS FEEDING THE TANKS WITH AIR. THEN PULL THE RING ON THE RELIEF VALVE TO RELIEVE THE AIR OUT OF THE CAN.**
- 1) LIFT THE HANDLE ON THE CAP AND REMOVE. (BE SURE NOT TO LOOSE THE O-RING FOR THE CAP.)**
 - 2} POUR THE PRODUCT (2 GALLON) IN THE CAN.**
 - 2) REPLACE THE CAP. MAKE SURE THE O-RING IS IN PLACE. PUSH THE HANDLE DOWN.**
 - 4) OPEN BALL VALVES AND PRESSURIZE CART.**



**FILL TANKS WITH AIR THROUGH VALVE STEM AT
END OF CART.**

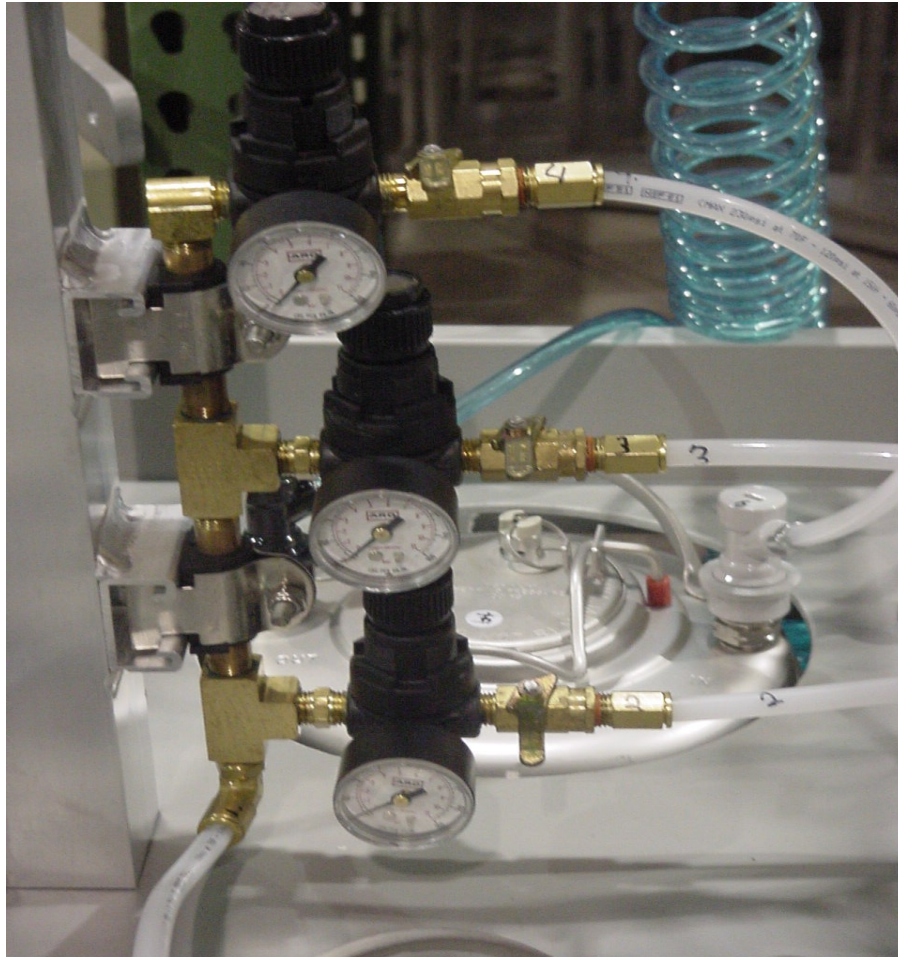
**ADJUST THE REGULATOR TO 75 psi - THE RELIEF
VALVES ON THE TANK LID ARE SET AT 80 psi.**



SIGN FRAME AND SUPPLY GUN HOLDER ATTACHES TO CART WITH (4) 3/8" BOLTS.

INSTALL WITH REGULATOR MANIFOLD ON THE TANK SIDE.

2 – 9/16" WRENCHES REQUIRED.



ALL HOSE CONNECTIONS TO REGULATORS ARE WITH PUSH LOCK CONNECTORS

ATTACH TO NUMBERED HOSE

ADJUST REGULATORS TO DESIRED PRESSURE BETWEEN 40 - 60 PSI